

## Swivel Clamp Connector Joints

Aluminum, with Two-Part Clamp Pieces

### SPECIFICATION

#### Type

- Type **S**: Stepless adjustment

#### Identification no.

- No. **2**: With 5 stainless steel socket cap screws ISO 4762

#### Connector clamp

Aluminum

- Powder coated
- Black, RAL 9005, textured finish **SW**
- Plain finish, matte shot-plasted **BL**

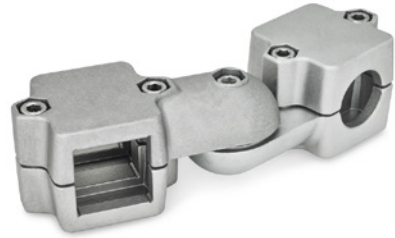
#### Socket cap screws ISO 4762

Stainless steel

#### Hex nuts DIN 985

Stainless steel

Self-locking via polyamide ring



### INFORMATION

Swivel clamp connector joints GN 289 are an assembly of two swivel clamp connectors GN 279 (see page 1858).

The square versions are also suitable for use with profile systems.

The clamping bores are not machined and are designed for construction tubes GN 990 (see page 1902) or DIN 2391, DIN 2395 and DIN 2462.

At the screw locations  $z_1$ , the socket cap screws reduce the cross-section for clamping.

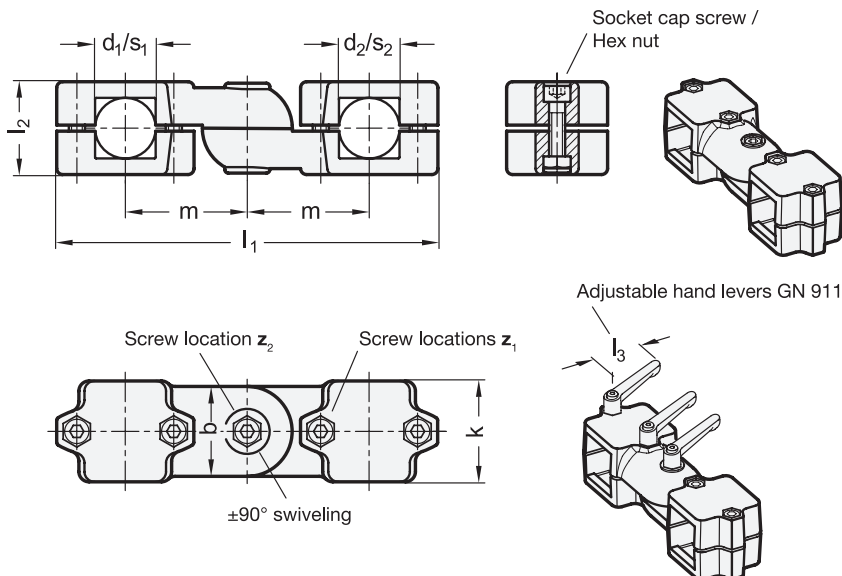
For clamping without tools, the socket cap screws can be replaced by the adjustable hand levers GN 911 (see page 1874) listed in the table as accessory.

### ACCESSORY

- GN 911 Adjustable Hand levers (see page 1874)

### TECHNICAL INFORMATION

- Stainless Steel Characteristics (see page A26)



\* Complete with

**SW** **BL**  
RAL9005 Plain finish

### GN 289-B-B

Description	d1 - d2 Bore-Bore	b Swivel width	k	l1	l2	m	z1 Screw locations	z2 Screw locations	Accessory Recom.hand lever GN 911 for z1 l3	Accessory Recom.hand lever GN 911 for z2 l3	⚖
GN 289-B40-B40-S-2-*	B40-B40	65	76	268	70	85	M10-60	M10-55	78   92	78   92	1731
GN 289-B40-B42-S-2-*	B40-B42	65	76	268	70	85	M10-60	M10-55	78   92	78   92	1855
GN 289-B40-B45-S-2-*	B40-B45	65	76	268	70	85	M10-60	M10-55	78   92	78   92	1720
GN 289-B40-B48-S-2-*	B40-B48	65	76	268	70	85	M10-60	M10-55	78   92	78   92	1699
GN 289-B40-B50-S-2-*	B40-B50	65	76	268	70	85	M10-60	M10-55	78   92	78   92	1691
GN 289-B42-B42-S-2-*	B42-B42	65	76	268	70	85	M10-60	M10-55	78   92	78   92	1979
GN 289-B42-B45-S-2-*	B42-B45	65	76	268	70	85	M10-60	M10-55	78   92	78   92	1844
GN 289-B42-B48-S-2-*	B42-B48	65	76	268	70	85	M10-60	M10-55	78   92	78   92	1823
GN 289-B42-B50-S-2-*	B42-B50	65	76	268	70	85	M10-60	M10-55	78   92	78   92	1815
GN 289-B45-B45-S-2-*	B45-B45	65	76	268	70	85	M10-60	M10-55	78   92	78   92	1900
GN 289-B45-B48-S-2-*	B45-B48	65	76	268	70	85	M10-60	M10-55	78   92	78   92	1688
GN 289-B45-B50-S-2-*	B45-B50	65	76	268	70	85	M10-60	M10-55	78   92	78   92	1680
GN 289-B48-B48-S-2-*	B48-B48	65	76	268	70	85	M10-60	M10-55	78   92	78   92	1760
GN 289-B48-B50-S-2-*	B48-B50	65	76	268	70	85	M10-60	M10-55	78   92	78   92	1659
GN 289-B50-B50-S-2-*	B50-B50	65	76	268	70	85	M10-60	M10-55	78   92	78   92	1651

Weight SW

### GN 289-B-S

Description	d1 - d2 Bore-Square	b Swivel width	k	l1	l2	m	z1 Screw locations	z2 Screw locations	Accessory Recom.hand lever GN 911 for z1 l3	Accessory Recom.hand lever GN 911 for z2 l3	⚖
GN 289-B40-V40-S-2-*	B40-V40	65	76	268	70	85	M10-60	M10-55	78   92	78   92	1843
GN 289-B42-V40-S-2-*	B42-V40	65	76	268	70	85	M10-60	M10-55	78   92	78   92	1967
GN 289-B45-V40-S-2-*	B45-V40	65	76	268	70	85	M10-60	M10-55	78   92	78   92	1832
GN 289-B48-V40-S-2-*	B48-V40	65	76	268	70	85	M10-60	M10-55	78   92	78   92	1811
GN 289-B50-V40-S-2-*	B50-V40	65	76	268	70	85	M10-60	M10-55	78   92	78   92	1803
GN 289-B40-V45-S-2-*	B40-V45	65	76	268	70	85	M10-60	M10-55	78   92	78   92	1799
GN 289-B42-V45-S-2-*	B42-V45	65	76	268	70	85	M10-60	M10-55	78   92	78   92	1923
GN 289-B45-V45-S-2-*	B45-V45	65	76	268	70	85	M10-60	M10-55	78   92	78   92	1788
GN 289-B48-V45-S-2-*	B48-V45	65	76	268	70	85	M10-60	M10-55	78   92	78   92	1767
GN 289-B50-V45-S-2-*	B50-V45	65	76	268	70	85	M10-60	M10-55	78   92	78   92	1759
GN 289-B40-V50-S-2-*	B40-V50	65	76	268	70	85	M10-60	M10-55	78   92	78   92	1759
GN 289-B42-V50-S-2-*	B42-V50	65	76	268	70	85	M10-60	M10-55	78   92	78   92	1883
GN 289-B45-V50-S-2-*	B45-V50	65	76	268	70	85	M10-60	M10-55	78   92	78   92	1748
GN 289-B48-V50-S-2-*	B48-V50	65	76	268	70	85	M10-60	M10-55	78   92	78   92	1727
GN 289-B50-V50-S-2-*	B50-V50	65	76	268	70	85	M10-60	M10-55	78   92	78   92	1719

Weight SW

### GN 289-S-S

Description	d1 - d2 Square-Square	b Swivel width	k	l1	l2	m	z1 Screw locations	z2 Screw locations	Accessory Recom.hand lever GN 911 for z1 l3	Accessory Recom.hand lever GN 911 for z2 l3	⚖
GN 289-V40-V40-S-2-*	V40-V40	65	76	268	70	85	M10-60	M10-55	78   92	78   92	1740
GN 289-V40-V45-S-2-*	V40-V45	65	76	268	70	85	M10-60	M10-55	78   92	78   92	1911
GN 289-V40-V50-S-2-*	V40-V50	65	76	268	70	85	M10-60	M10-55	78   92	78   92	1827
GN 289-V45-V45-S-2-*	V45-V45	65	76	268	70	85	M10-60	M10-55	78   92	78   92	1867
GN 289-V45-V50-S-2-*	V45-V50	65	76	268	70	85	M10-60	M10-55	78   92	78   92	1827
GN 289-V50-V50-S-2-*	V50-V50	65	76	268	70	85	M10-60	M10-55	78   92	78   92	1787

Weight SW

